



DIVISION SCOLAIRE

**LOUIS RIEL**

SCHOOL DIVISION

**LRSD ELECTORATE**

**LRSD SCHOOL BOARD**

**ELECTED TRUSTEES:**

**CHAIR**  
Sandy Nemeth  
**VICE-CHAIR**  
Louise Johnston

Pamela Kolochuk  
Josie Landry  
Robert Page  
Tom Parker  
Chris Sigurdson  
Cindy Turner  
Neil Vadeboncoeur

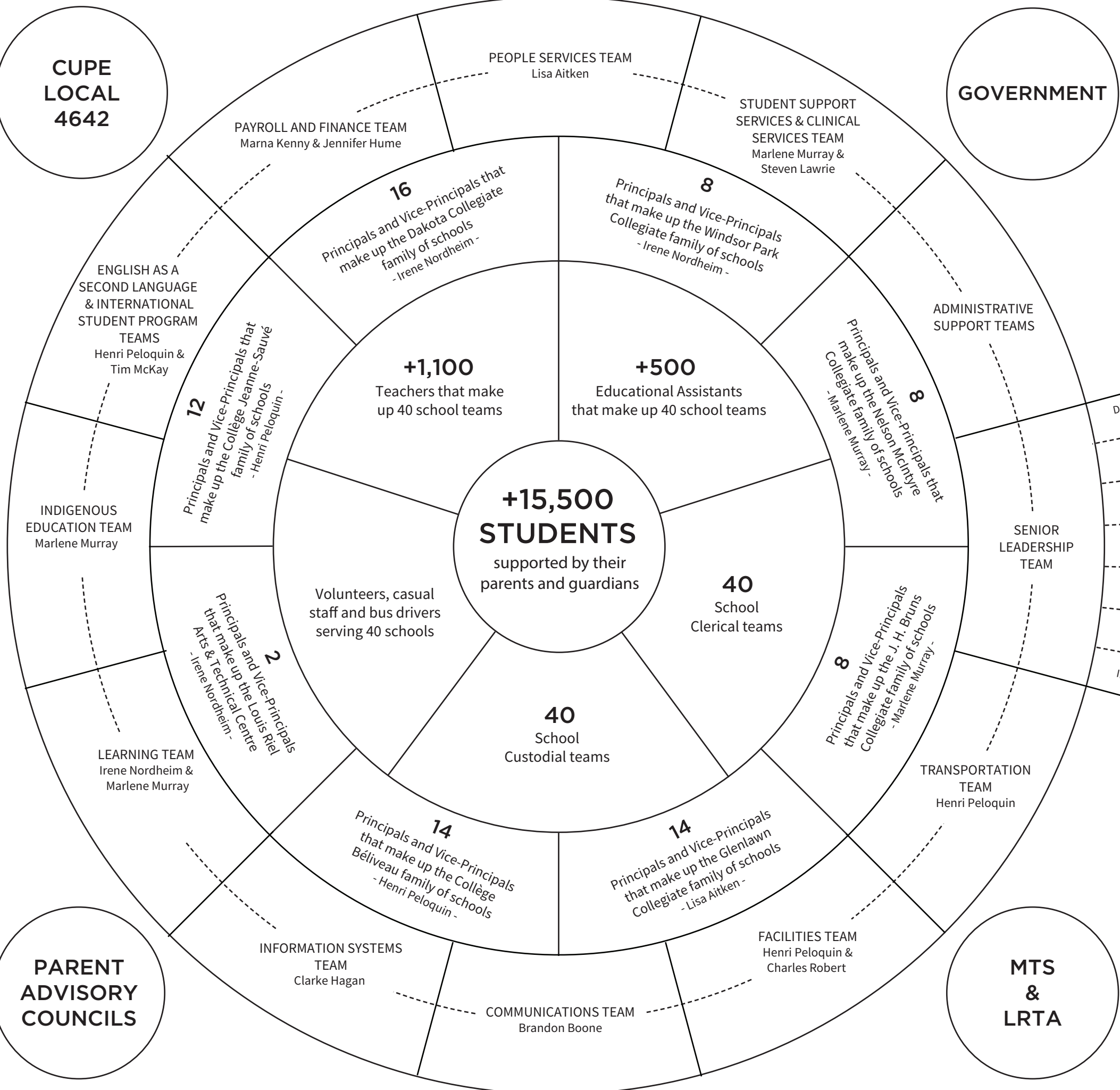
**SUPERINTENDENT**  
Christian Michalik

### LOUIS RIEL SCHOOL DIVISION ORGANIZATIONAL CHART: SUPPORTING STUDENT LEARNING

The care and support of all learners are at the centre of everything we do in the Louis Riel School Division (LRSD). Our organizational chart reflects that focus while also incorporating Indigenous perspectives of leadership to ensure our entire community is included. The nine elected LRSD school board trustees are connected to this circle and represent their Wards' collective voices. The trustees bring those perspectives to discussions on LRSD decision-making processes. As stated in the Public Schools Act, public education is a shared responsibility between school boards and the Minister of Education. Along with the Department of Education and other levels of government, the Louis Riel Teachers' Association, Manitoba Teachers' Society, CUPE Local 4642 and Parent Advisory Councils are important organizational structures connected to our circle of learning.

**GOVERNMENT**

**MTS & LRTA**



- DIRECTOR OF FACILITIES**  
Charles Robert
- DIRECTOR OF EAL & ISP PROGRAMS**  
Tim McKay
- ASSISTANT SECRETARY-TREASURER**  
Jennifer Hume
- DIRECTOR OF STUDENT SUPPORT SERVICES**  
Steven Lawrie
- DIRECTOR OF INFORMATION SYSTEMS**  
Clarke Hagan
- ASSISTANT SUPERINTENDENT**  
Henri Pelloquin
- ASSISTANT SUPERINTENDENT**  
Henri Pelloquin
- SECRETARY-TREASURER**  
Marna Kenny
- ASSISTANT SUPERINTENDENT**  
Marlene Murray
- ASSISTANT SUPERINTENDENT**  
Irene Nordheim
- ASSISTANT SUPERINTENDENT**  
Lisa Aitken