



# LOUIS RIEL SCHOOL DIVISION MIDDLE AND LATE IMMERSION INFORMATION EVENING

2025

# Land Acknowledgement

The Louis Riel School Division (LRSD) brings together a community of schools on the traditional land of the Anishinaabeg, Ininewak, and Dakota. Our division is located on the National Homeland of the Red River Métis. We recognize that Manitoba is also the traditional land of the Anishininiwak and Dene.

We respect the treaties made on this land and acknowledge the harms and mistakes of the past and present. We dedicate ourselves to authentic alliances with Indigenous communities in a spirit of reconciliation and cooperation.

We recognize and honour Shoal Lake 40 First Nation, the source of Winnipeg's life-sustaining drinking water, as well as the Treaty Territories that generate and provide the electricity that powers daily activity throughout the province and beyond.

The ongoing development of LRSD's land acknowledgement is guided by our Indigenous Council of Grandmothers and Grandfathers, and we thank them for their generosity and collaboration.



# WELCOME AND INTRODUCTION OF STAFF



---

# WHAT ARE THE MIDDLE AND LATE IMMERSION PROGRAMS IN LRSD?

- They are intensive, accelerated programs intended for students who are interested and motivated to learn French as an additional language.
- They are 3-year programs.
- After three years, students will be prepared to successfully integrate into a French Immersion class in their catchment school.

---

# THE BENEFITS OF BEING PLURILINGUAL

## 1. Cognitive Advantages

- Improves memory and problem-solving skills.
- Enhances creativity and adaptability.
- Facilitates additional language acquisition

## 2. Academic Success

- Strengthens literacy and language learning skills.
- Facilitates the understanding of complex concepts.

## 3. Cultural Awareness

- Promotes appreciation of different cultures and perspectives.
- Builds empathy and global-mindedness.
- Encourages meaningful cross-cultural connections.

## 4. Career Opportunities

- Increases employability in a globalized job market.
- Opens doors to international assignments and roles.
- Strengthens communication with diverse clients and colleagues.

## 5. Personal Growth

- Boosts confidence and adaptability in new situations.
- Deepens self-awareness through multilingual identity.



---

# OUTLINE OF THE GRADE 4 PROGRAM

---

The emphasis of the grade 4 program is on the following:

- sound and vocabulary acquisition;
- language development and fluency in speaking and listening;
- first stages and development of literacy (reading and writing) in French;
- MI students have physical education, music and recess like all other students in the school and that all classes are conducted in French;
- Mathematics vocabulary and fundamentals until December such as place value, addition and subtraction;
- Grade 4 Math curriculum, Social Studies and Science are implemented after winter break once students are feeling more confident with the French language;
- There is no formal English taught during this school year.

# OUTLINE OF THE GRADE 5 PROGRAM

The emphasis of the grade 5 program is on the following:

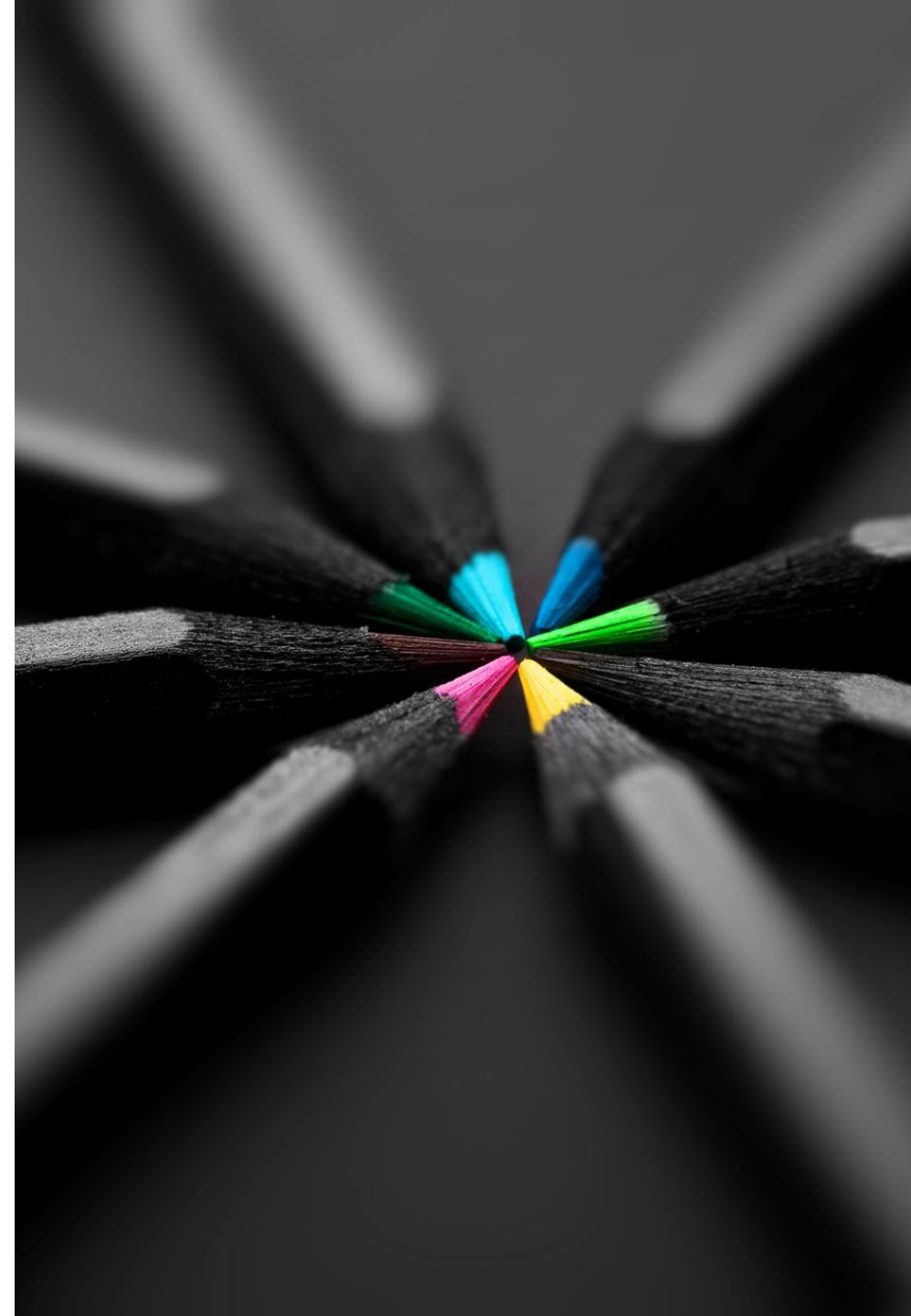
- students communicate (read, write, speak and represent) in French from the very first day of school;
- continuation of the objectives taught in grade 4 with an increased focus on the development of literacy (reading) in French;
- English Language Arts and Social Studies instruction begins in late September;
- Science is introduced in the second term;
- due to the focus of language acquisition in grade 4, topics that were not covered will be explored in grade 5.

---

# OUTLINE OF THE GRADE 6 PROGRAM

The emphasis of the grade 6 program is on the following:

- continuation of the objectives taught in grade 5;
- increased focus on the development of writing in French;
- further preparing students to successfully integrate into a regular grade 7 French Immersion class by the end of grade 6.





# LATE IMMERSION (GRADE 6 ENTRY POINT)

## Supporting Rapid Language Acquisition

- A specialized program designed for students entering French Immersion at Grade 6.
- Focused on developing the foundational vocabulary and language skills required to support learning across all subject areas.

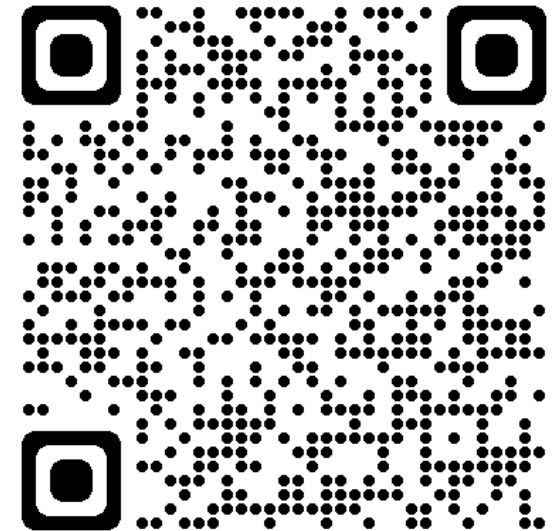
## Key Features:

- **Intensive Language Development:** Daily instruction emphasizes oral communication, reading, and writing in French.
- **Vocabulary Building:** Targeted strategies to accelerate the acquisition of academic and social vocabulary.
- **Mirroring Grade 4 Entry:** Aligns with the pedagogical approaches of earlier immersion entry points, adapted for older learners.

## Three-Year Pathway to Success

- A carefully designed curriculum ensures students:
  - **Close Gaps:** Achieve linguistic and academic milestones to realign with peers.
  - **Build Confidence:** Develop skills to fully participate in immersion programming.
  - **Prepare for High School:** Transition seamlessly into Grade 9 Immersion courses alongside lifelong immersion learners.

- Middle Immersion in LRSD





## FAMILY AND STUDENT TESTIMONIALS

- We have the pleasure of hearing testimonials from a grade 6 École Henri-Bergeron parent along with grade 6 middle immersion students from École Julie-Riel.

---

# FREQUENTLY ASKED QUESTIONS

---

Is Middle Immersion a good fit for my child?

---

What will the homework routine look like?

---

What is my role as a parent of a student in the Middle Immersion Program?

---

What if I don't speak French?

---

What if my child doesn't like the program and wants to return to his/her previous school?

---

What about extended absences or family travel?

---

How can I be sure that my child can get his/her needs met if the teacher only speaks in French?

---

What are the arrangements for divisional transportation?

---

Is there a daycare?

---



---

# TRANSITION TO GRADE 7 (FROM MIDDLE IMMERSION) AND TO GRADE 9 (FROM LATE IMMERSION)

## **Middle Immersion:**

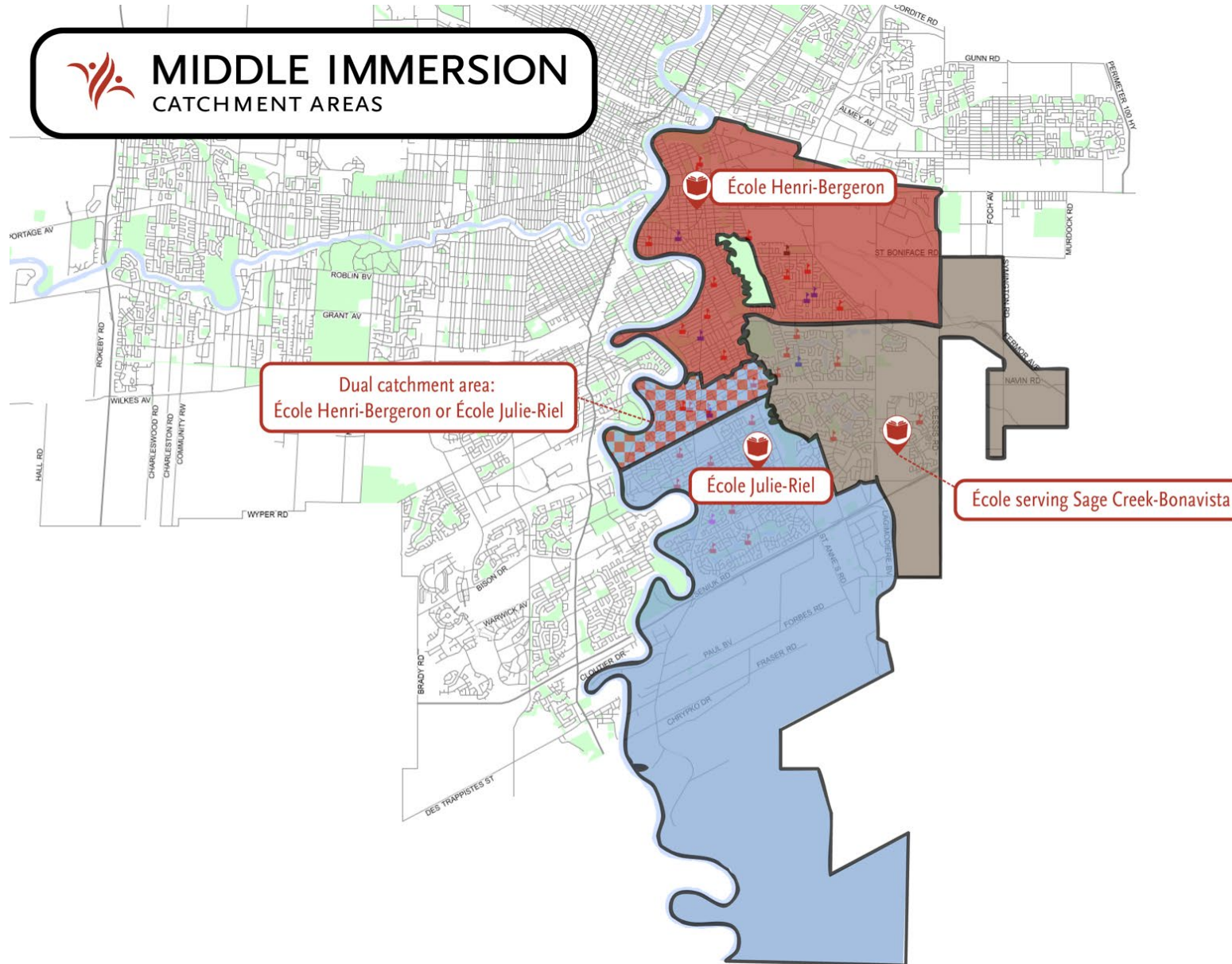
Once students complete Gr. 6 Middle Immersion, they join Early Immersion students (those who began in KG or Gr. 1) in their catchment school.

## **Late Immersion:**

Once students complete Gr. 7 Middle Immersion, they join the French Immersion High School of their catchment area (Collège Béliveau or Collège Jeanne-Sauvé)



## MIDDLE IMMERSION CATCHMENT AREAS



### École Henri-Bergeron

- Marion School
- Archwood School
- Frontenac School
- General Vanier School (Windsor Park)
- Nordale School
- Glenwood School
- Windsor School
- St. George School

### École Henri-Bergeron or École Julie-Riel

- Hastings School
- Victor Mager School
- Lavallee School

### École Julie-Riel

- Darwin School
- Minnetonka School
- Dr. D.W. Penner School
- Victor H.L. Wyatt School
- H.S. Paul School
- Highbury School

### École serving Sage Creek-Bonavista

- Niakwa Place School
- Shamrock School
- Island Lakes Community School
- Sage Creek School
- General Vanier School (Rural)

---

# TRANSPORTATION

## ■ In catchment:

Transportation provided for students in grade 4-6 who live further than 1.6 km of the school

- Grade 7 & 8 transportation is available as a paid seat option

## ■ Out of catchment:

Transportation is the responsibility of the family





MIDDLE  
IMMERSION  
PROGRAM  
BROCHURE



# NEXT STEPS

1. Registration via the LRSD website opens Monday, February 3rd. Given the seating limits, submitting this registration form will not guarantee final enrolment.
2. Keep spreading the word to your family and friends.



---

PLEASE COMPLETE  
THIS SHORT  
FEEDBACK SURVEY

# Middle and Late Immersion Parent Information Evening



**MERCI!**

**WE LOOK FORWARD TO YOUR CHILD'S  
LANGUAGE LEARNING JOURNEY!**