



DIVISION SCOLAIRE  
**LOUIS RIEL**  
SCHOOL DIVISION

## Design with Us

**J.H. Bruns Collegiate  
Class D Estimate & Design  
Concept Presentation**

# Forecasted Milestones

Date	Action Item
June 2022	Submitted a Capital Request to the Province
October 20	Block Planning: High Level Design Review and consultation
October to November	Continued consultation with government partners (municipal and provincial) Opportunities for additional community feedback
December 15, 2022	Finalized option with Class D Cost Estimate unveiled to the community and submitted to the Province
January 2023	Enhance submission Capital Request to the Province by providing concept and Class D Estimate
May 2023	Anticipate an announcement regarding the project
As early as September 2024	Addition and renovation completed

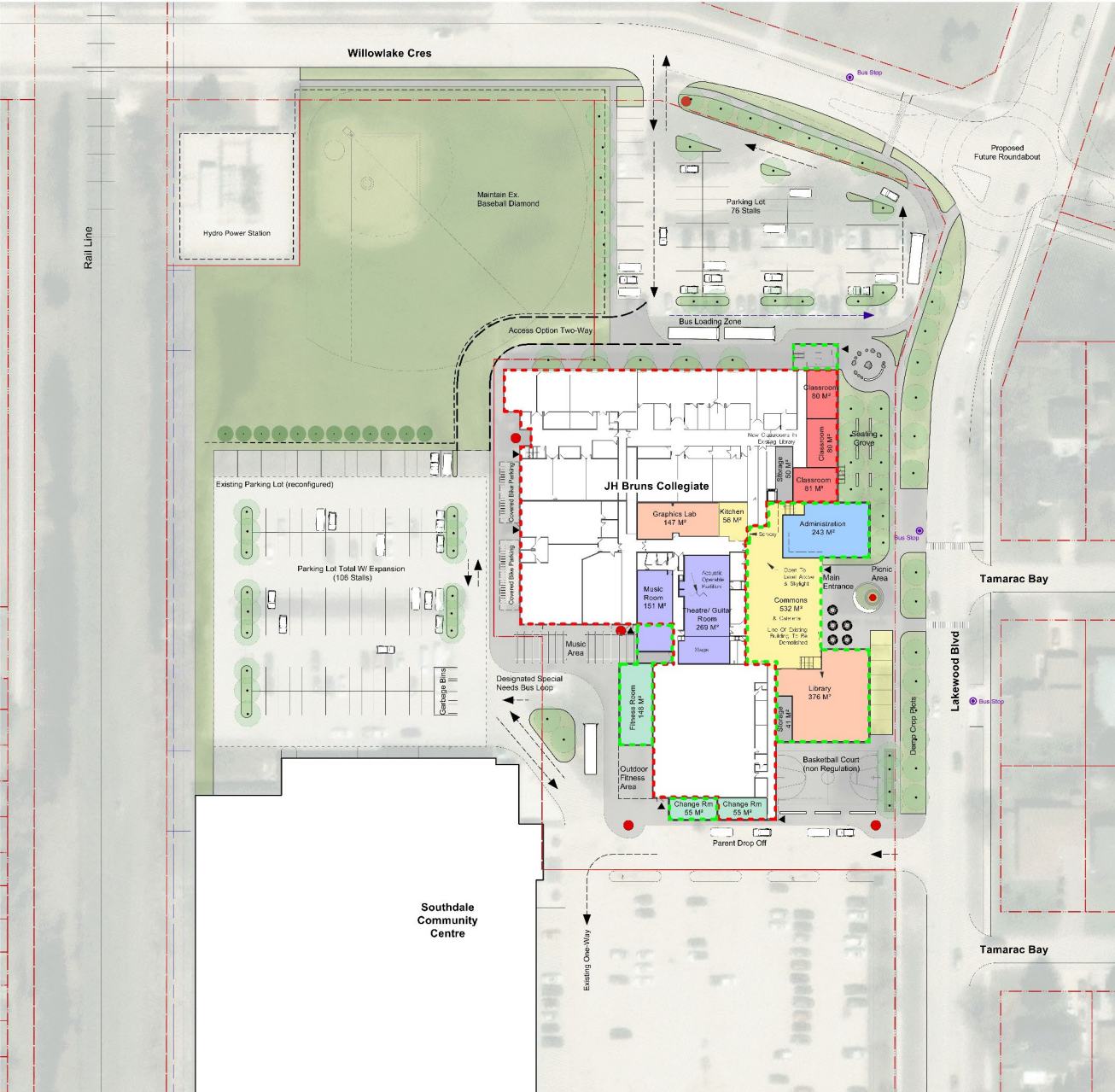
\*A formal traffic study will be initiated once the project is approved by Province for design.



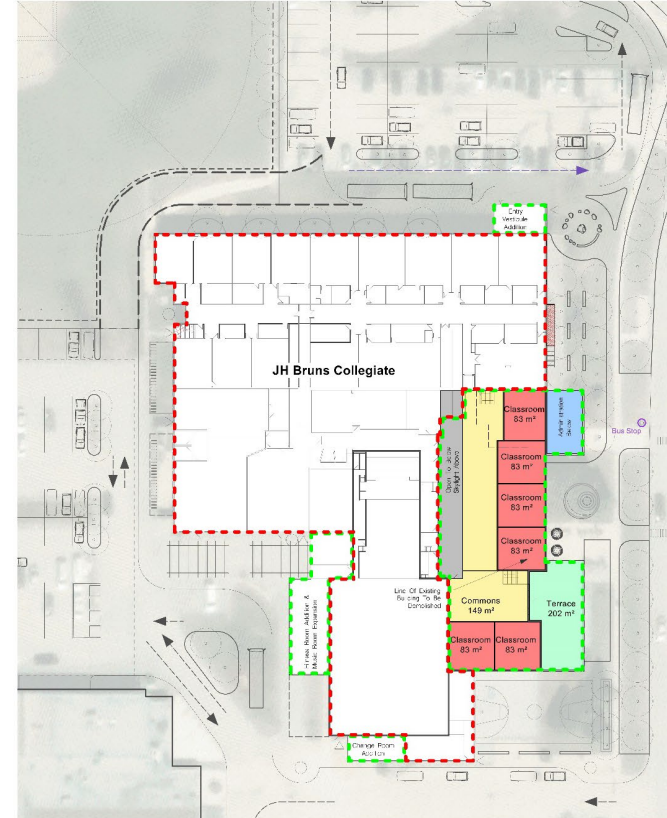
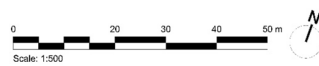
**HTFC**  
PLANNING & DESIGN



Presentation of Concept & Class D Estimate



# CONCEPT MASTER PLAN



## SECOND FLOOR ADDITION

### SITE DEVELOPMENT LEGEND

- Property Line
- Softscape
- Hardscape
- Play Space
- Sign / Site Feature
- Garden / Crop Plots
- Bike Racks
- Vehicle Circulation
- Bus Circulation
- Fence
- Crossing
- Trees

### BUILDING ARCHITECTURE LEGEND

- Administration
- Classroom
- Commons
- Library
- Fitness
- Performance Art
- Rooftop Learning Terrace
- New Addition
- Existing Building



View from the Northeast



View from the Southeast



View of new North Entry

# CONCEPT MASTER PLAN

## Program

1 x Graphics Lab:	147 sq m
1 x Music/Band Room:	148 sq m
<b>9 x Classrooms:</b>	<b>80 sq m (720 sq m total)</b>
<b>1 x Student Commons:</b>	<b>530 sq m</b>
<b>1 x Upper Commons:</b>	<b>150 sq m</b>
<b>1 x Administration:</b>	<b>240 sq m</b>
<b>1 x Library:</b>	<b>375 sq m</b>
<b>1 x Fitness Room: 150 sq m</b>	
2 x Change Rooms:	55 sq m each (110 sq m total)
2 x Storage Rooms:	40/50 sq m (90 sq m total)
<b>1 x Outdoor Terrace:</b>	<b>200 sq m</b>

\*Highlighted areas indicate new construction

## Project Information

Two-Storey Addition: **2,125 sq m**  
 Commons, Library, Administration, Classrooms  
 Main Floor: 1,185 sq m  
 Second floor: 940 sq m

One-Storey Addition: **200 sq m**  
 Fitness, Change Room, Music Room Expansion

North Entry Addition: **65 sq m**

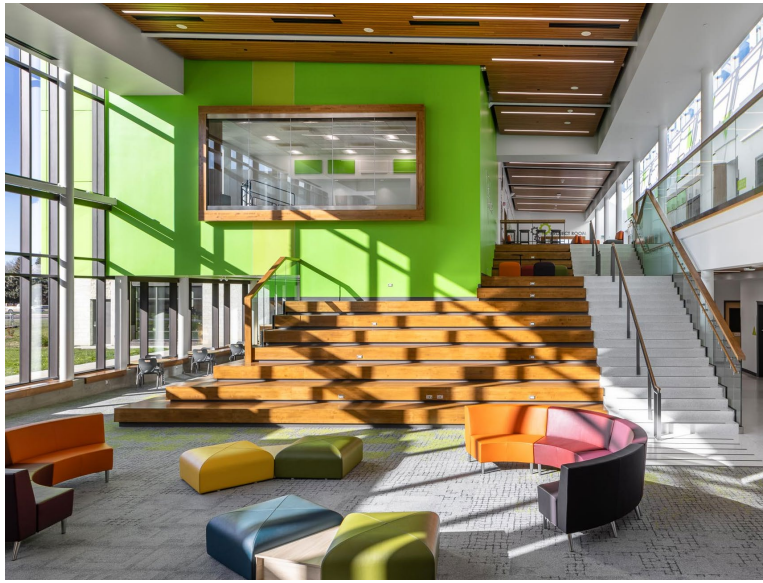
## Parking Statistics

Projected 2022 staff / student counts provided by LRSD as follows:  
 - 79 Faculty, 15 Casual Staff

Zoning Requirements: 1 stall per 2 faculty, 1 per 4 employees  
 = 40 Faculty Stalls, 4 Casual Staff

**Total Required: 44 Stalls for Students / Faculty**

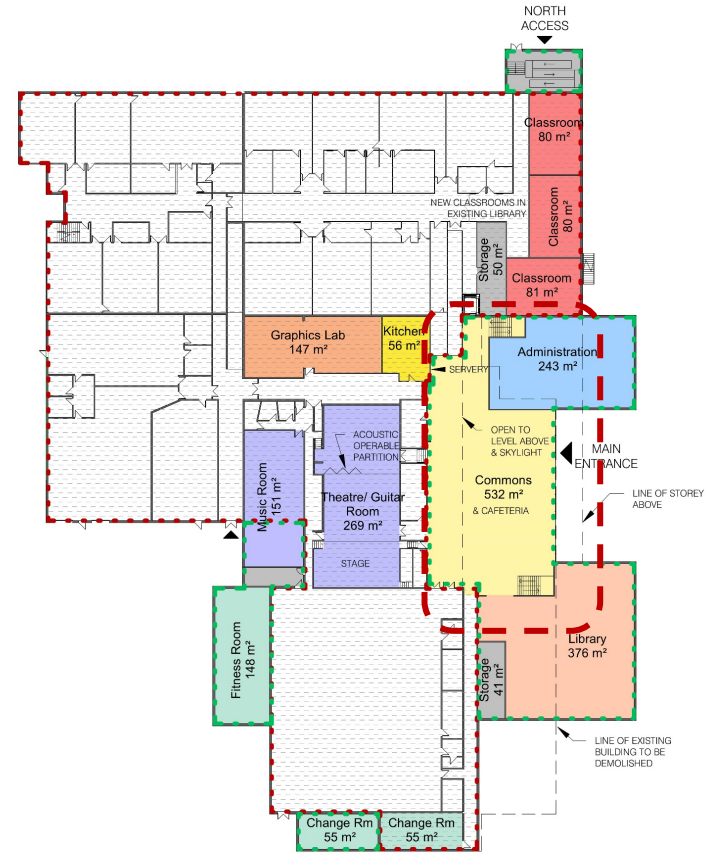
**Total Parking Provided: 85 Stalls for Students / Faculty**



Two storey Student Commons



One storey Student Commons

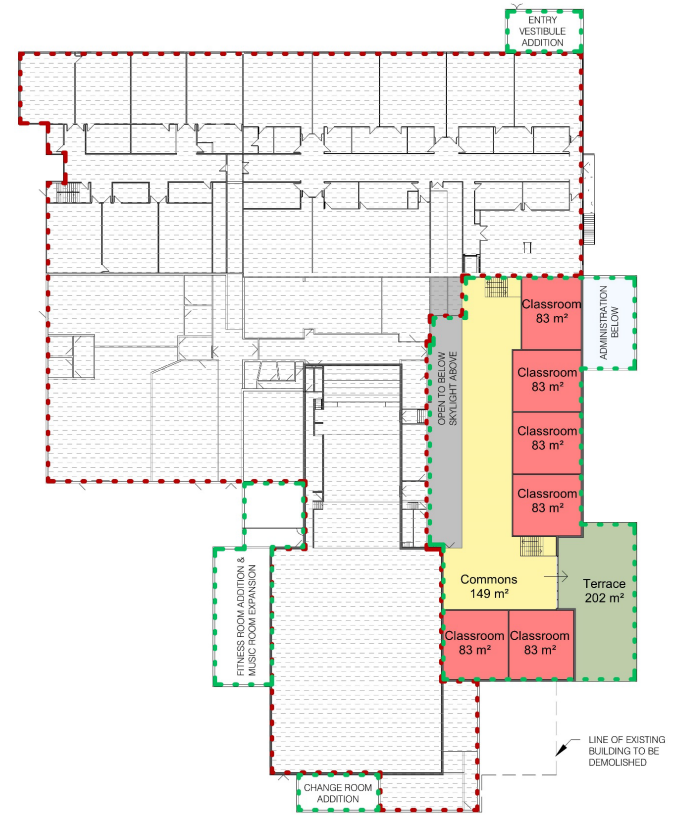


MAIN FLOOR & LOWER LEVEL

# CONCEPT MASTER PLAN



Second Floor Student Commons



SECOND FLOOR



Open Breakout Space



Rooftop Learning Terrace

# CONCEPT MASTER PLAN



View the concept at  
[lrsd.link/bruns-major-project](https://lrsd.link/bruns-major-project)

Scan the QR code to provide your  
feedback or visit  
[lrsd.link/bruns-feedback-december-2022](https://lrsd.link/bruns-feedback-december-2022)